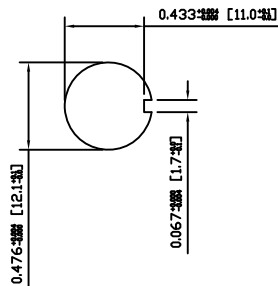
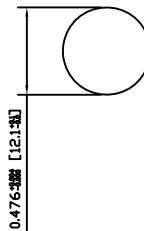


SUGGESTED PANEL CUTOUT



ALTERNATE PANEL CUTOUT



**MATERIALS**

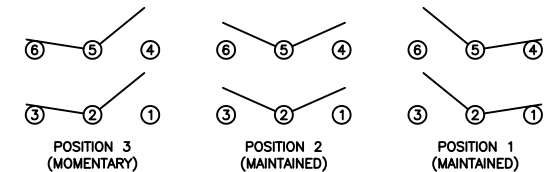
- BODY:  
Phenolic, UL94 V-0
- ACTUATOR:  
Nickel Plated Brass
- BUSHING:  
Nickel Plated Brass
- HOUSING:  
Stainless Steel
- HARDWARE:  
Nickel Plated Steel
- FUNCTION PLATE:  
Stainless Steel
- SPACER PLATE:  
Laminate Board
- SPRING:  
Steel
- PLUNGER:  
Nylon
- MOBILE CONTACT:  
Silver Plated Copper
- MOBILE CONTACT PIVOT:  
Silver Plated Copper
- CONTACTS:  
Silver Alloy Clad Copper
- TERMINALS:  
Brass

**SPECIFICATIONS**

- FUNCTION:  
2P2T ON-OFF-(ON)
- RATINGS:  
ANSI/UL1054 and CAN/CSA C22.2 No.55 (E194579):  
20A 125VAC [cURus]  
15A 277VAC [cURus]  
1.5HP 125/277VAC [cURus]
- CONTACT RESISTANCE:  
Initial: 50mΩ Max. at 50VAC
- INSULATION RESISTANCE:  
800MΩ Min. at 500VDC
- DIELECTRIC STRENGTH:  
1,500VAC for 1 Minute
- OPERATING LIFE:  
6,000 Cycles [cURus]
- TEMPERATURE:  
Operating: -20°C to 85°C [cURus]
- APPROVALS:



**SCHEMATIC**



ACTUATOR	B	10/11/16	CAB
BODY	B	10/11/11	CAB
MATERIALS	A	09/06/03	CAB
SPECIFICATIONS	A	09/06/03	CAB
REFERENCE	REV.	DATE	BY

THE INFORMATION CONTAINED IN THIS DOCUMENT IS PROPRIETARY TO E-SWITCH AND IS NOT TO BE COPIED OR TRANSFERRED

C	UPDATED POSITION NUMBERS	24487	9/14/20	MJR
B	CORRECTED PANEL CUTOUT DIMENSIONS	19380	11/16/10	CAB
A	INITIAL RELEASE	19333	9/29/10	CAB
REV.	DESCRIPTION	PCR	DATE	DRAWN BY

DIMENSIONS	
INCHES [MILLIMETERS]	
GENERAL TOLERANCES	
0.000~0.236: ±0.004 [0~6: ±0.1]	
0.236~1.181: ±0.012 [6~30: ±0.3]	
1.181~4.724: ±0.020 [30~120: ±0.5]	
SCALE	DRAWING NOT TO SCALE

TITLE		
ST24JD00		
ITEM NUMBER	DATE	REVISION
34-ST24JD00	SEPTEMBER 29, 2010	C